



LOWER MINNESOTA RIVER WATERSHED DISTRICT

Executive Summary for Action

Lower Minnesota River Watershed District Board of Managers Meeting
Wednesday, May 15, 2024

Agenda Item

Item 6. C. - Minnesota Department of Transportation (MnDOT) Stormwater Pond Maintenance Group A Project (LMRWD No. 2024-002)

Prepared By

Linda Loomis, Administrator

Summary

The Minnesota Department of Transportation (MnDOT) is required to periodically repair and maintain stormwater ponds. Two locations slated for repair and maintenance in 2024 fall within the boundaries of the LMRWD. MnDOT has made application for a permit from the LMRWD for both of these projects. Young Environmental Consulting Group has reviewed the application and supporting documentation on behalf of the LMRWD. Based on the review of the application, conditional approval is recommendation subject of receipt of a copy of the NPDES construction stormwater permit, Contact information for the contractor(s) undertaking land-disturbing activities, contact information for the person(s) responsible for erosion control inspections and maintenance, and designation of an individual liable to the LMRWD for performance under Rule B.

Attachments

Technical Memorandum – Minnesota Department of Transportation (MnDOT) Stormwater Pond Maintenance Group A Project (LMRWD No. 2024-002)

Recommended Action

Motion to conditionally approve a permit for MnDOT Stormwater Pond Maintenance Group A Project (LMRWD No. 2024-002) subject to receipt of a copy of the NPDES construction stormwater permit, Contact information for the contractor(s) undertaking land-disturbing activities, contact information for the person(s) responsible for erosion control inspections and maintenance, and designation of an individual liable to the LMRWD for performance under Rule B

Technical Memorandum



To: Linda Loomis, Administrator
Lower Minnesota River Watershed District (LMRWD)

From: Rachel Kapsch, Water Resources Scientist
Hannah LeClaire, PE, Project Manager

Date: May 8, 2024

Re: Minnesota Department of Transportation (MnDOT) Stormwater Pond Maintenance Group A Project (LMRWD No. 2024-002)

MnDOT has applied for an individual project permit from the LMRWD to conduct repairs and maintenance on MnDOT stormwater ponds in 2024. There are two locations slated for pond maintenance in the LMRWD:

1. **Site 4** is located north of Cliff Road and west of 35W within the Cliff Road on-ramp loop to 35W southbound (SB) in Burnsville, MN (Figure 1 and 2). The associated MnDOT pond number is 2318851.
2. **Site 6** is located on Metropolitan Airports Commission (MAC) property to the west of Trunk Highway 5 and to the south of Post Road (within Minneapolis city limits) (Figure 1 and 3). The associated MnDOT pond number is 2319300.

The applicant's engineer, TKDA, submitted the permit application, associated application exhibits, and site plans for the Stormwater Pond Maintenance Group A project.

The project will disturb 1.59 acres and 1.75 acres at Sites 4 and 6, respectively. General pond maintenance activities include pond dewatering, clearing and grubbing of cattails and vegetation, and excavation of accumulated sediment and muck. There will be no new or reconstructed impervious area and no new permanent stormwater best management practices (BMPs). Site 4 pond maintenance activities include cleaning and videotaping 164 linear feet of storm sewer pipe and installation of geotextile filter type 3 and Class III riprap to stabilize erosion at storm sewer pipe inlets to the pond. Site 6 pond maintenance activities include cleaning and videotaping 200 linear feet of storm sewer pipe, and installation of Class IV riprap to restore the pond forebay dam. Cleaning and videotaping of storm sewer pipe will take place before or during pond excavation activities.

The project is not located within a High-Value Resource Area, Steep Slopes Overlay District, or the Minnesota River Floodplain. The applicant proposes to begin maintenance activities in June 2024. The project triggers LMRWD Rule B – Erosion and Sediment Control. An individual permit is required for the project elements proposed by MnDOT within the LMRWD and is subject to a LMRWD permitting review.

SUMMARY

Project Name:

MnDOT Stormwater Pond Maintenance Group A

Purpose:

Perform pond maintenance activities such as sediment and muck excavation, vegetation removal, and repair to storm sewer infrastructure.

Project Size:

	Proposed Area of Disturbance
Area Disturbed (Site 4)	1.59 acres
Area Disturbed (Site 6)	1.75 acres

Locations:

Site 4: Cliff Road and 35W SB, Burnsville, MN

Site 6: West of Trunk Highway No. 5 and south of Post Road, Minneapolis, MN

LMRWD Rules:

Rule B – Erosion and Sediment Control

Recommended Board Action:

Conditional approval

DISCUSSION

The LMRWD received the following documents for review:

- LMRWD online permit application; received March 20, 2024.
- LMRWD application exhibits for MnDOT Multiple Stormwater Pond Maintenance Group A by TKDA; received March 20, 2024.
- Authorization of agent form, signed easement agreement between MnDOT and MAC, and updated plan set; received April 9, 2024.
- Anticipated construction implementation schedule and final construction plans signed by a professional engineer; received April 26, 2024.

The application was deemed complete on April 26, 2024, and the documents received provide the minimum information necessary for permit review.

Rule B – Erosion and Sediment Control

The LMRWD regulates land-disturbing activities that affect one acre or more under Rule B. The proposed project would disturb approximately 3.34 acres, cumulatively, within the LMRWD boundary. The applicant has provided construction, drainage, erosion, and turf establishment plans and a Stormwater Pollution Prevention Plan (SWPPP). Proposed erosion and sediment control measures include riprap, category 25 rolled erosion prevention (with seed mix 35-241 and type 4 fertilizer), category 25 rolled erosion prevention (with seed mix 33-261 and type 4 fertilizer), storm drain inlet protection, culvert end controls, sediment control logs (compost), and silt fences.

The project generally complies with Rule B; however, before a permit can be issued the LMRWD will need a copy of the National Pollutant Discharge Elimination System (NPDES) construction stormwater permit, contact information for the contractor(s) performing land-disturbing activities, contact information for the person(s) responsible for erosion control inspections and maintenance, and designation of an individual liable to the LMRWD for performance under Rule B.

Recommendations

Based on review of the project, we recommend conditional approval of the MnDOT Stormwater Pond Maintenance Group A Project contingent on the receipt of the following:

- Copy of the NPDES construction stormwater permit.
- Contact information for the contractor(s) undertaking land-disturbing activities.
- Contact information for the person(s) responsible for erosion control inspections and maintenance.
- Designation of an individual liable to the LMRWD for performance under Rule B.

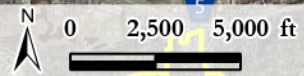
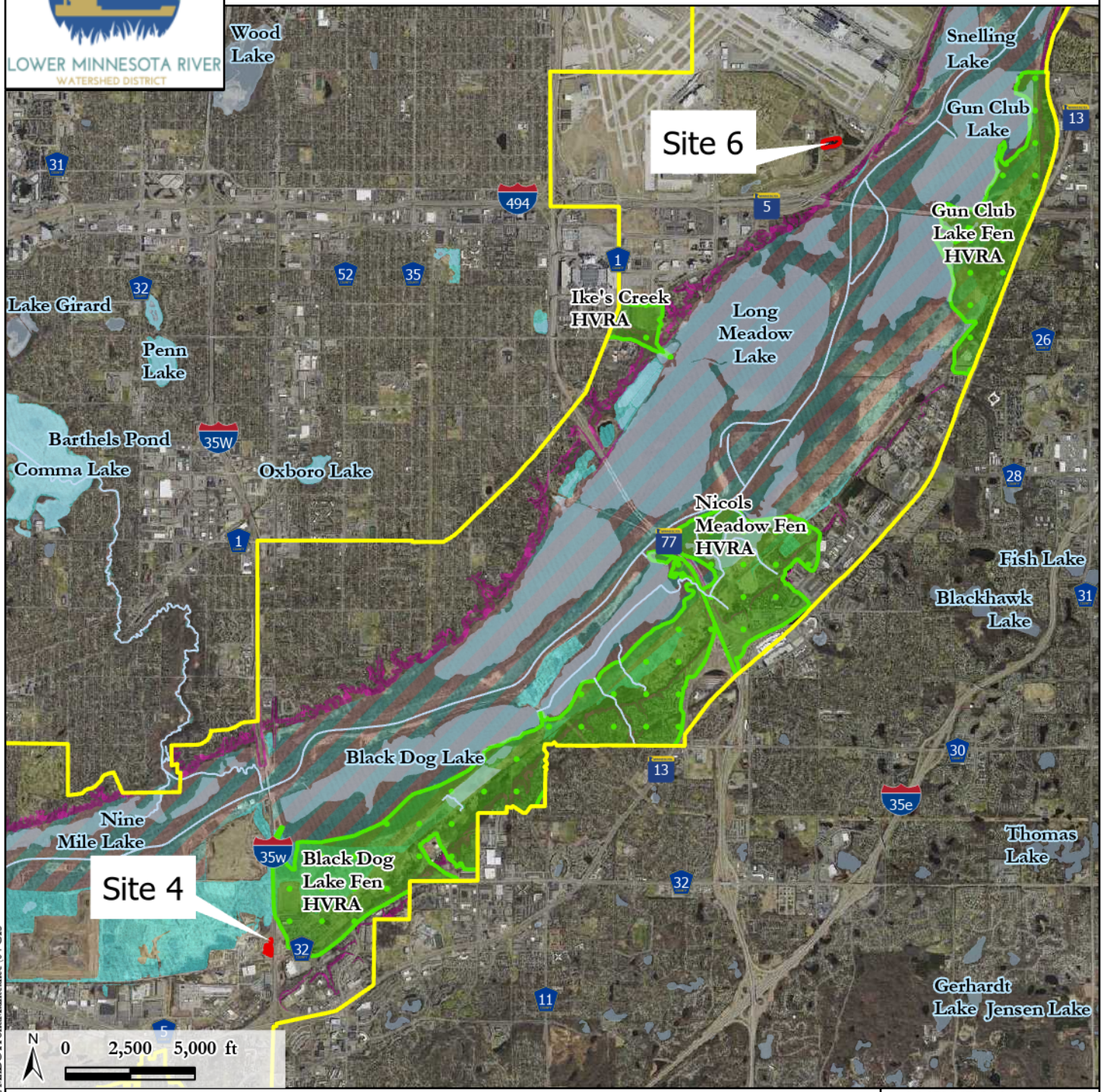
Attachments

- Figure 1—Site 4 and Site 6 Project Location Map
- Figure 2—Site 4 Map
- Figure 3—Site 6 Map



MnDOT Pond Maintenance Project Locations

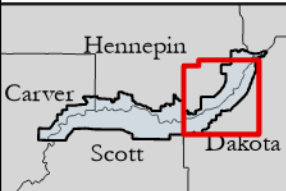
LMRWD No. 2024-002



Legend

- Construction Limits
- LMRWD Boundary
- Public Waters
- Public Waterbodies
- High Value Resource Area
- Steep Slope Overlay District
- 100-yr Floodplain
- Floodway

LMRWD Watershed Location Map

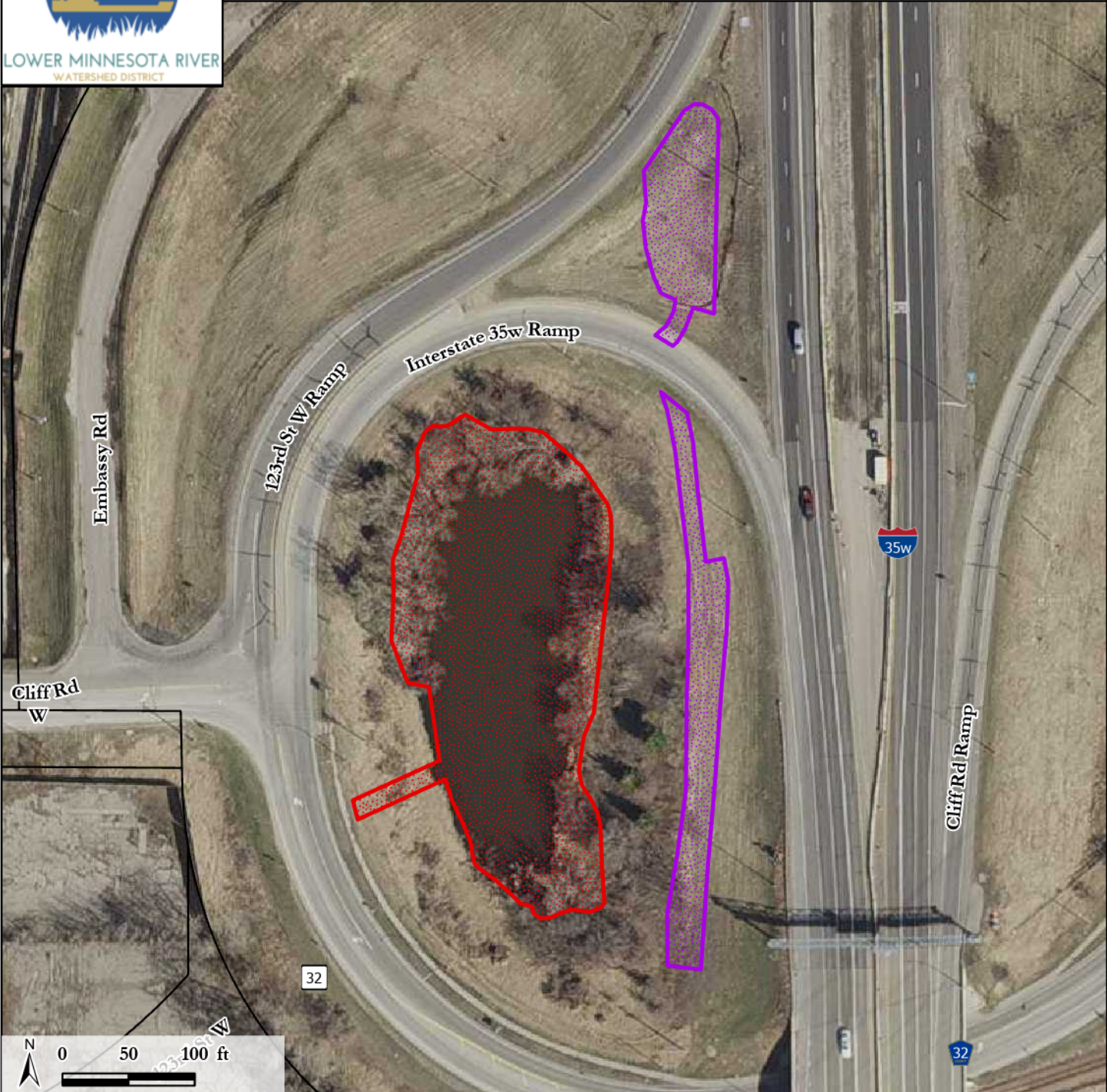


Project: LMRWD | Project Reviews | 02 In Process | 2024-002 MnDOT Pond Maintenance | 04 GIS



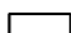


MnDOT Pond Maintenance Site 4 Project Location

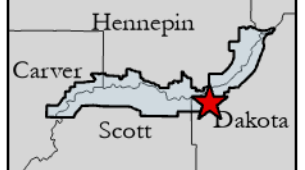
LMRWD No. 2024-002



Legend

-  Construction Limits
-  Disposal Locations
-  Parcels

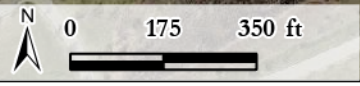
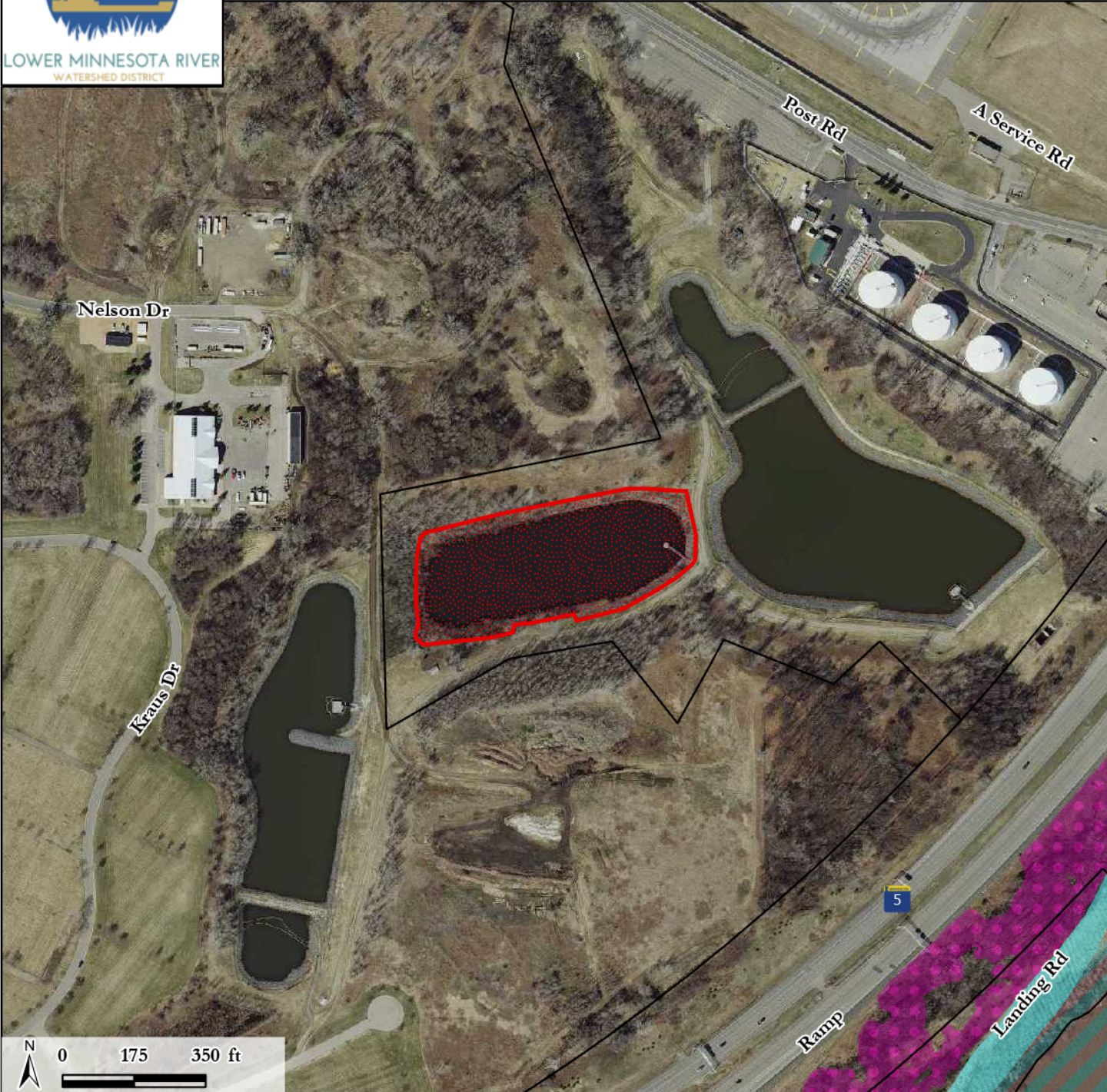
LMRWD Watershed Location Map





MnDOT Pond Maintenance Site 6 Project Location

LMRWD No. 2024-002



- Legend**
- Construction Limits
 - Parcels
 - Steep Slope Overlay District
 - 100-yr Floodplain
 - Floodway

LMRWD Watershed Location Map



Project: LMRWD Project Review 02 In Process \2024-002 MnDOTPondMaintenance_04 GIS